

# Nexus Arts

WELCOMES YOU 😊

This is a visual story on  
HOW TO GET HERE.



How do I  
get to  
Nexus Arts?

It's so  
easy!

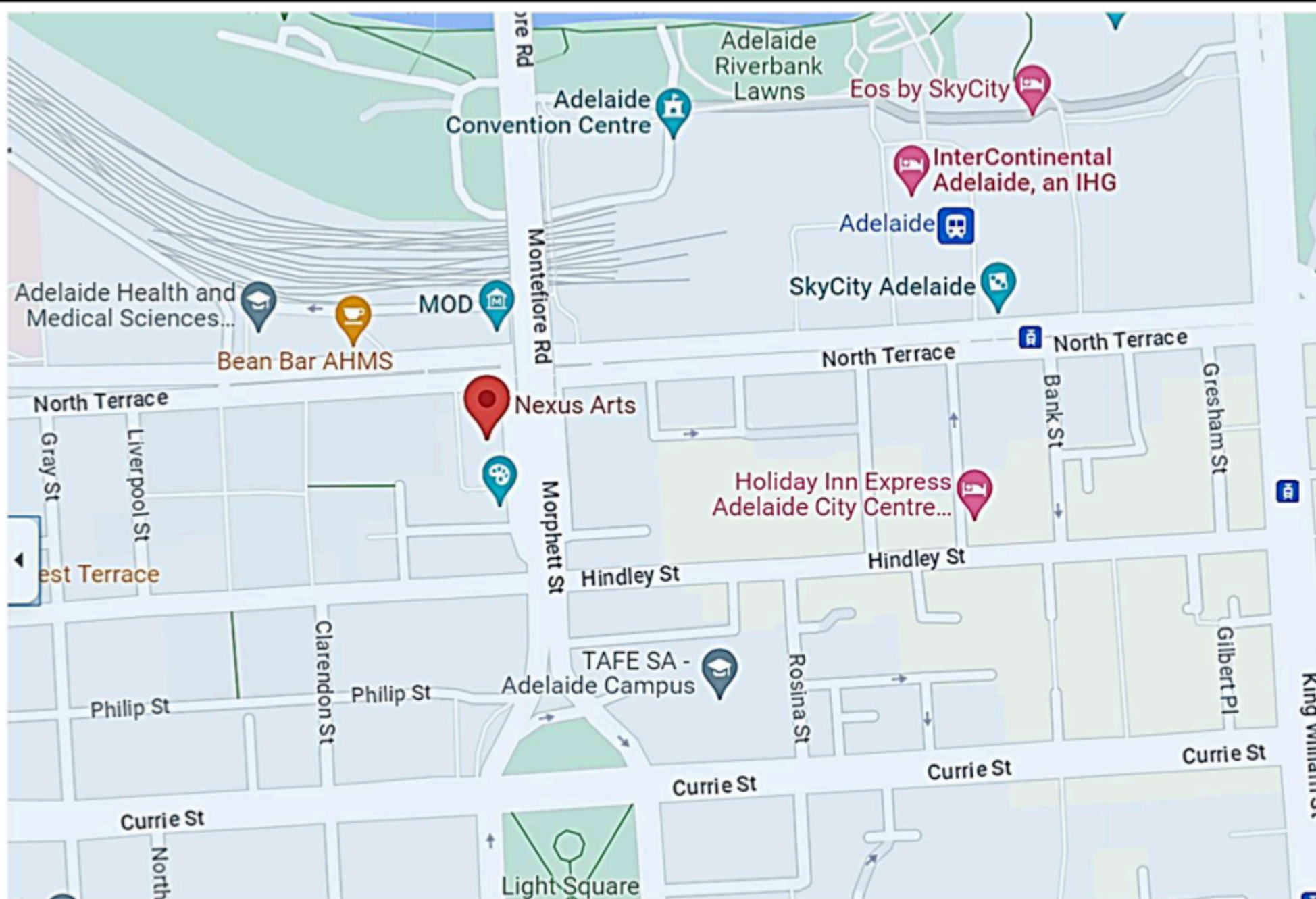


This document  
has all I  
needed to  
make my  
journey easy.





First, find it on a map. This will give you directions.



It is in the city of Adelaide.

It is part of the Lion Arts Centre at the west end of the city.

The Lion Arts Centre is at the corner of Morphett Street and North Terrace – on the south side.

You can also click on [this Google Maps link](#) for in real time directions.



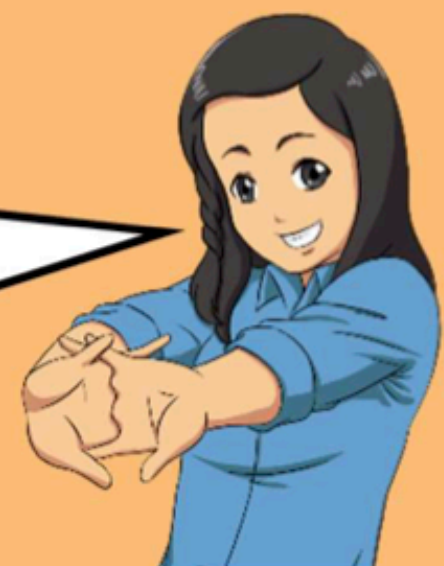
What if I  
get the  
BUS?



On the route along North Terrace:  
if you are coming from the West, get off at stop **C1 on the North side**. If you are coming from the East, get off at stop **X1 on the South side**.



I can ask the  
bus driver for  
assistance.





Sometimes I  
get the  
TRAM.  
It is FREE  
too.



First, get the tram into the city  
to/from the Entertainment Centre,  
Adelaide Royal Hospital or Glenelg.  
Get off at the CITY WEST stop



Then it is a few minutes walk.  
It is approx. 70 metres.

Cross to the South side of  
North Terrace.

Enter between red brick  
Fowlers building on the left  
and UniSA building on the  
right



NEXUS is on the left-hand-  
side midway up in the  
courtyard.



Getting the  
**TRAIN**  
suits me.



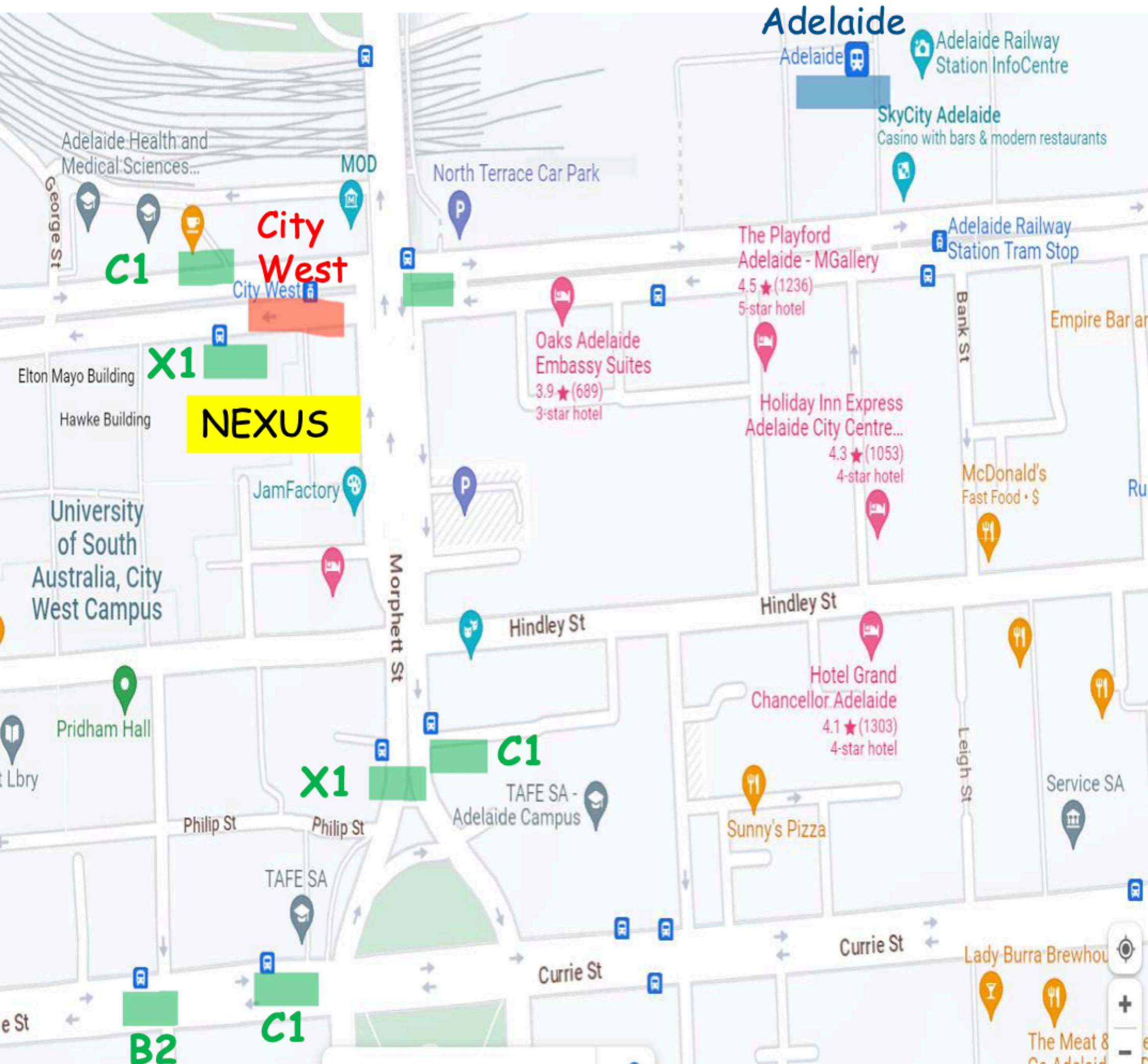
You can come from  
the **ADELAIDE**  
**RAILWAY**  
**STATION**.  
It will take about 10  
minutes .

When you leave the station,  
turn right along North Terrace.  
Then head West for about 600  
metres and cross the road to  
the South side of North  
Terrace.



When you get  
to the **CITY**  
**WEST** tram  
stop, follow  
instructions  
above.





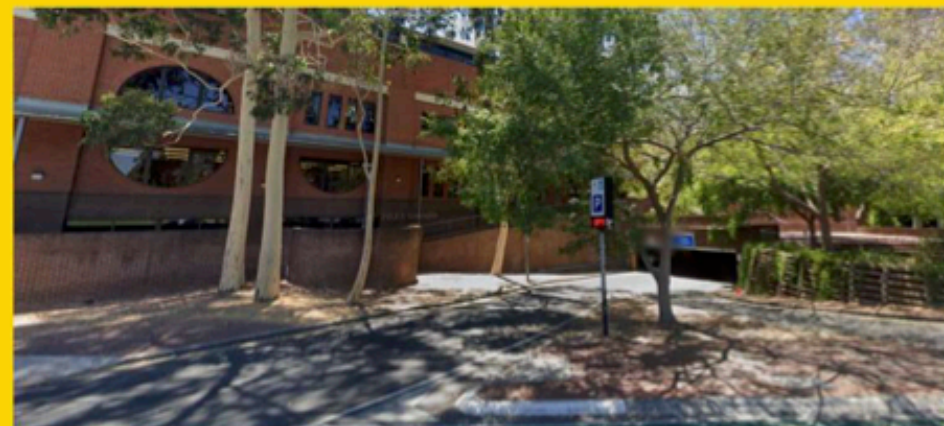
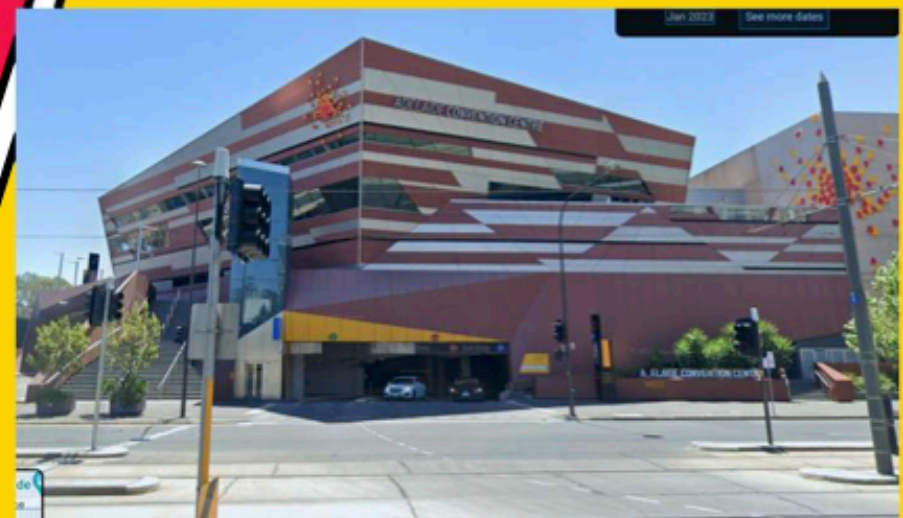
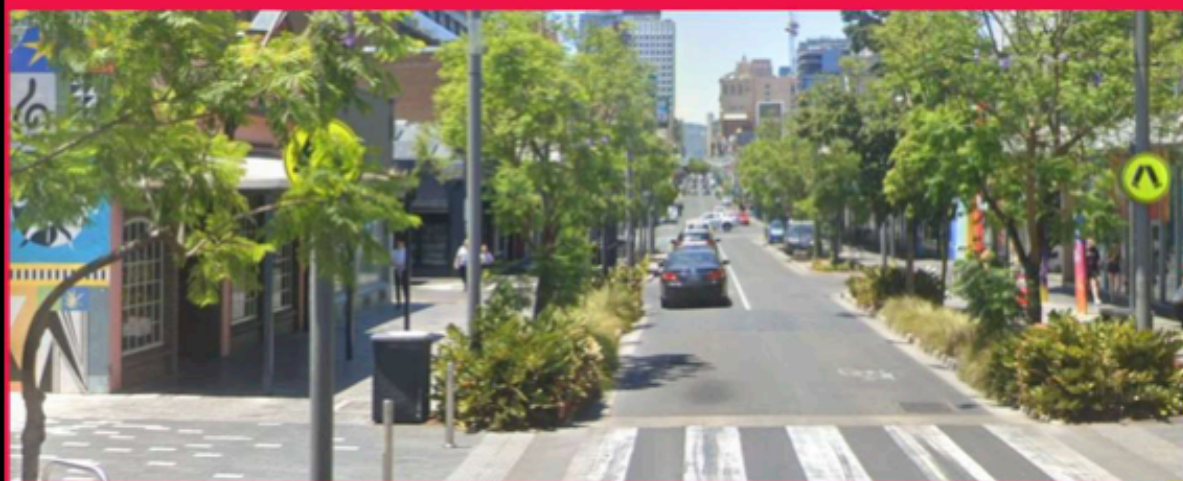
Here is a map showing all the public transport options for getting to NEXUS ARTS:





We want to come in a car.  
Is there car parking available?

There is street parking on Hindley Street and Light Square.. For peace of mind, it is best to give yourself ample time to find a car park on the street.



There are commercial parking lots at the Convention Centre on North Terrace and at Adelaide TAFE in Light Square.

There is an accessible car park at the Morphett Street Entrance.  
It is in front of the Jam Factory and Mercury Cinema.



There are more accessible car parks a bit further away.  
These spaces are on North Terrace outside of the SAMSTAG Museum front and UniSA West Campus.



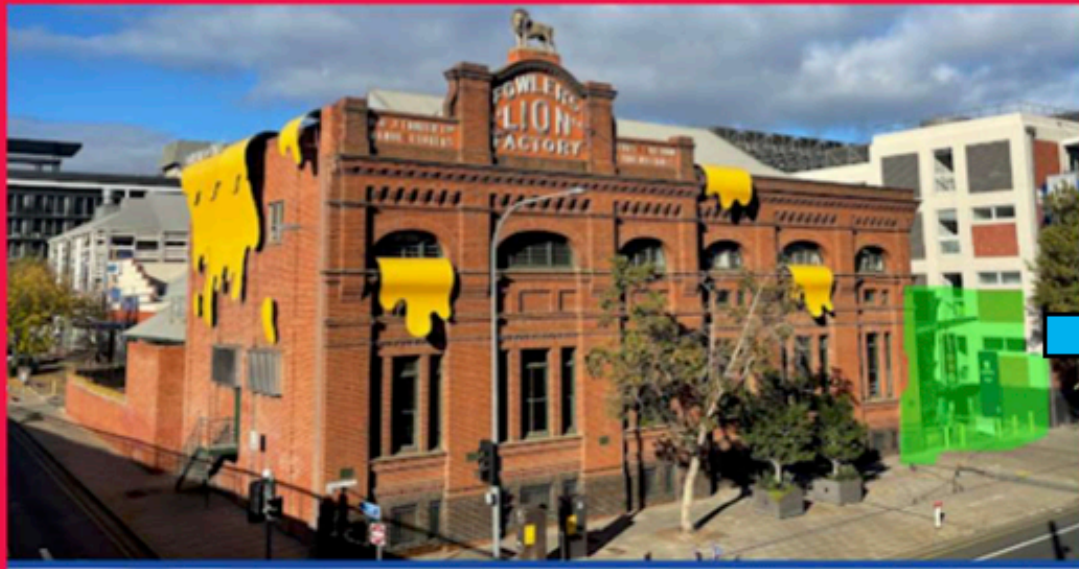




How do we find NEXUS ARTS within the Lion Arts Centre complex?  
There are TWO EASY WAYS!

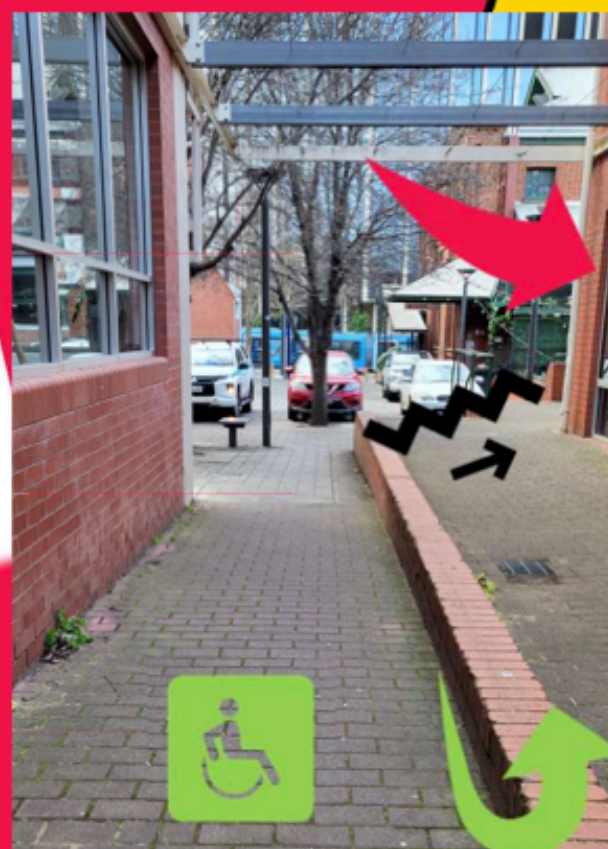
1) FROM SOUTH SIDE OF NORTH TERRACE.

Enter through these posts into the courtyard

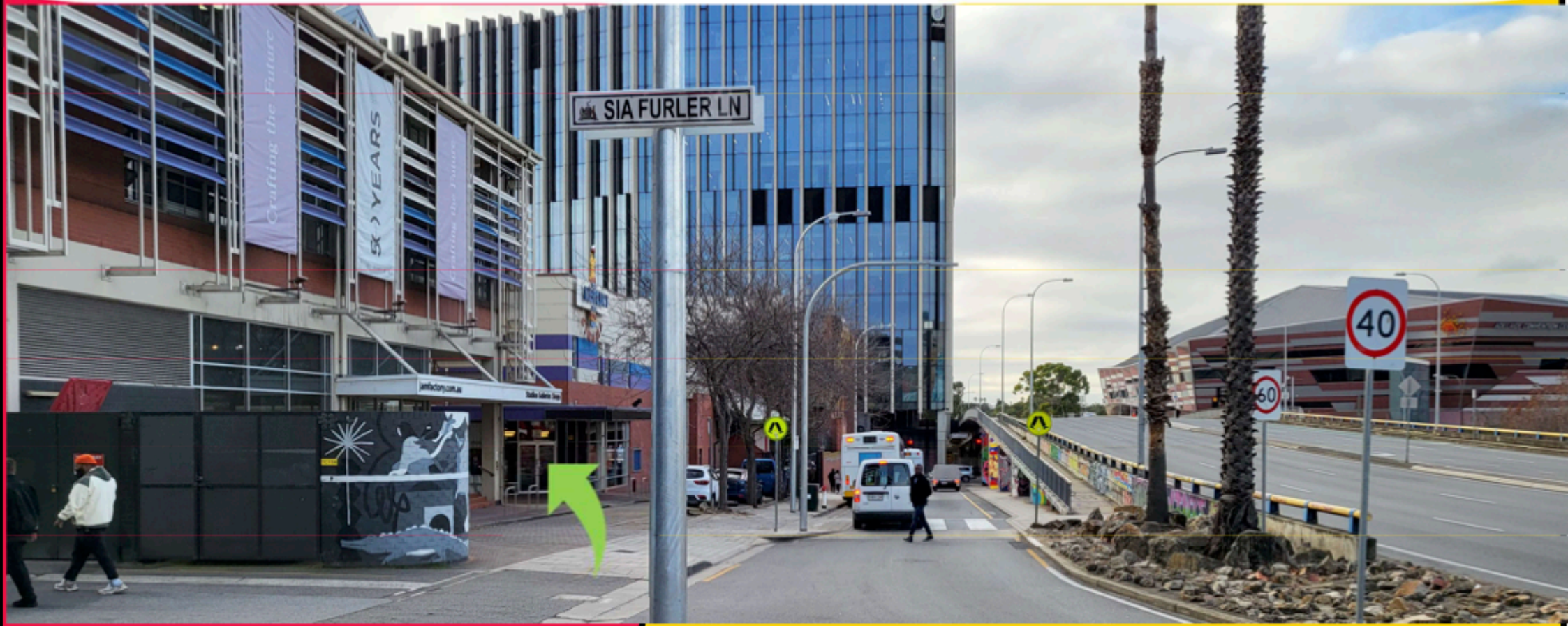


Nexus **GALLERY** will be second on your left. It is down a level via a ramped path or stairs at the end of the first ramp

Nexus **VENUE** is a little further on your left. You can access it by a small set of **stairs** or a **ramp** a bit more south.



2) FROM MORPHETT STREET (south-west side) NEXT TO THE BRIDGE, Just off HINDLEY STREET (north side)



a) Enter the laneway between Jam Factory and Mercury Cinema, heading west.

b) Keep heading west past the Jam Factory gallery

c) At the end turn right and go past Mercury Office and Guildhouse offices on your right. Nexus Venue will be next and then Nexus Gallery.



Here is a link to a video showing you how to access Nexus Gallery and Venue if you use a wheelchair or mobility aids.

[accessible entrance video](#)

Here is a link to our [VISIT US](#) webpage which will link you to our Accessibility, Transport and Find Us pages.



You got **HERE!**

**WELCOME** 😊



Nexus Arts Inc. 2023  
[www.nexusarts.org.au](http://www.nexusarts.org.au)